

DIESEL ARTICULATED BOOM

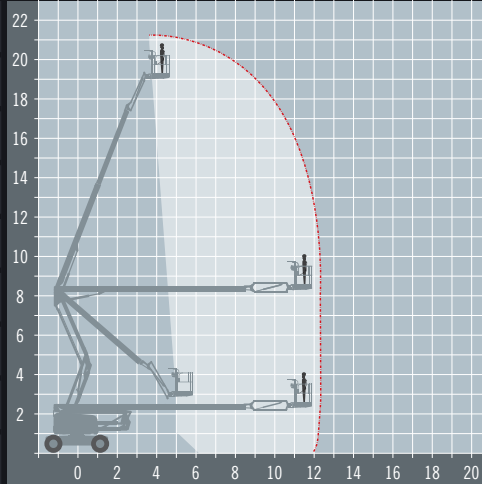
SKYJACK SJ63

ALTERNATIVES: Manitou 200ATJ, Nifty HR21



Rugged and versatile Articulated Diesel Boom

REACH HEIGHT	21.38 m
PLATFORM HEIGHT	19.38 m
UP AND OVER	8.38 m
HORIZONTAL REACH	12.19 m
STOWED HEIGHT	2.54 m
LENGTH X WIDTH*	9.14 x 2.44 m
PLATFORM SIZE	1.83 x 0.91 m
WEIGHT	10,200 kg
LIFT CAPACITY	227 kg



*Length and width shown are when stowed.

- DIESEL POWERED**
Perfect for external applications
- OUTDOOR RATED**
Wind rated for outdoor use
- ROUGH TERRAIN**
4 wheel drive for uneven ground
- IPAF 3b**
Requires IPAF category 3b

Skyjack's SJ63 is designed for versatility and flexibility with its 360 degree turret rotation and zero tail swing allowing it to operate easily in tight locations. Superior positive traction and terrainability is provided by the axle based 4WD used in many of Skyjack's product designs, which accounts for a proven low maintenance, rugged and reliable drive train.

A range of extra's for 'Hire or Purchase' designed to give you the GTAdvantage™

- DOUBLE POINT HARNESSES TO KEEP YOU SAFE AT HEIGHT**
- PROTECT FINISHED SURFACES WITH WHEEL COVERS'**
- REFUEL ON-SITE THE EASY WAY WITH A FUEL BOX!**
- OPERATOR TRAINING FOR THIS ACCESS PLATFORM**
- PROTECT SENSITIVE GROUND WITH 'GROUND GUARDS'**
- REMOVE THE RISK WITH GTA ALL RISK COVER**

Find out more about the 'GTAdvantage' extras at gtaccess.co.uk



gtaccess.co.uk



THE POWER IN ACCESS™

HIRE | TRAINING | SALES | SERVICE 0 3 3 0 3 3 3 4 8 4 8

GTASJ63-2019/1